





Reference image

Opulence now has a new address

Uber luxury residences at
Jayanagar, Bengaluru.





Why The Big Tree?

At the gate of your home stands an old Rubber Fig tree. As a part of the Banyan family, it is evergreen, life-giving and life-sustaining.

The cool shade of this ancient tree emits a friendly aura that makes it the centre of life. While its seemingly endless ability to flourish makes it a symbol of eternal life and prosperity.

In Hindu mythology, the tree is called 'Kalpavriksha' - the tree that fulfills wishes. And it is this grand old Rubber Fig tree that inspired us to name these ultra-exclusive residences The Big Tree.



The background is a dark, almost black, space filled with large, flowing, organic shapes in various shades of green. These shapes, which resemble liquid or smoke, move from the top and left towards the bottom right, creating a sense of dynamic movement. The colors range from deep forest green to a bright, almost white-green at the edges of the flowing forms.

Big on Design





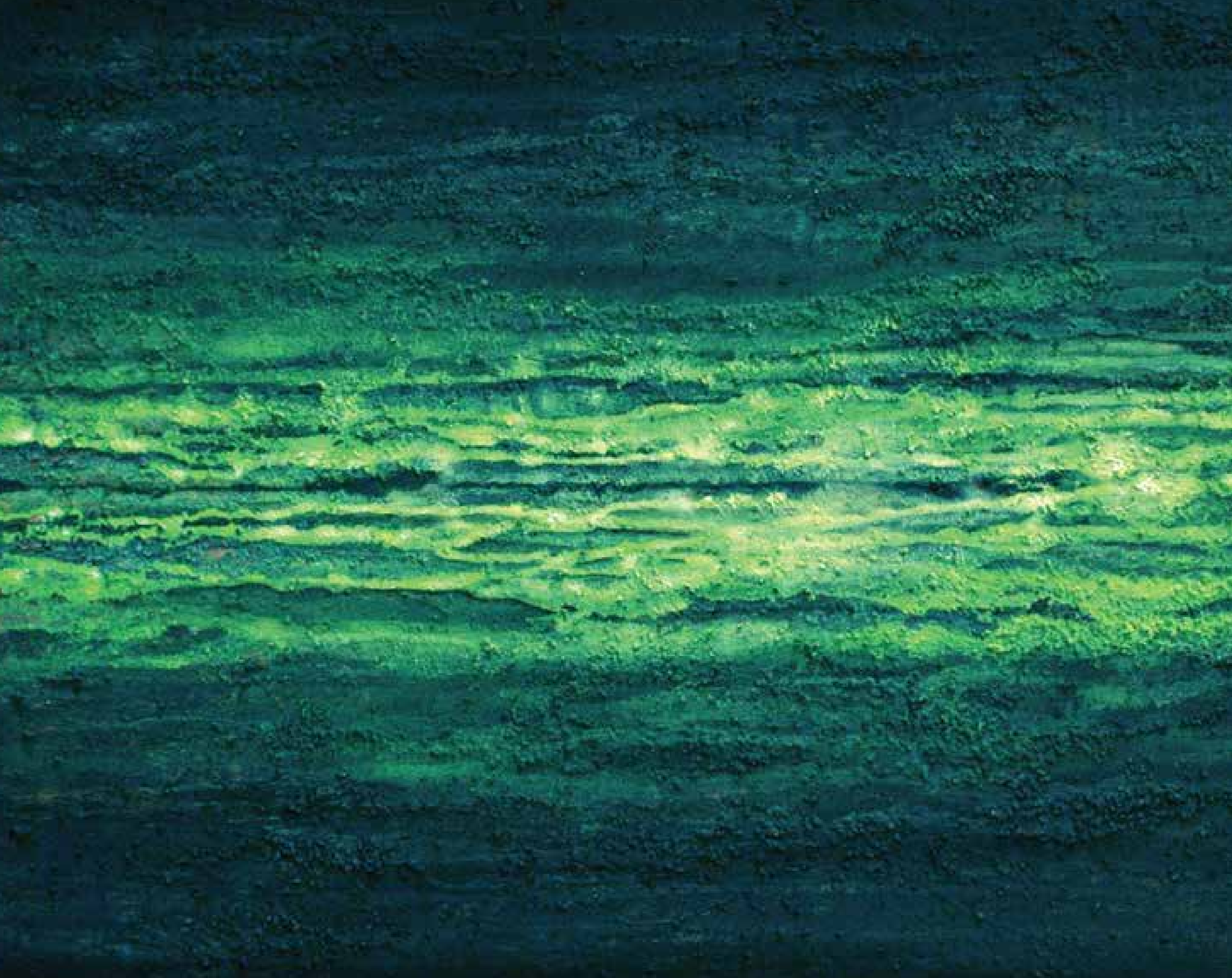
Reference image

Where space meets grace One floor. One residence.

If space is the definitive luxury in an increasingly crowded world, few lucky families will discover luxury in its truest sense. Designed with one residence to a floor and a option to split into 2 apartments, The Big Tree brings back a time when living was gracious and rooms were large enough to hide in.

These unique residences come with five spacious bedrooms, home theatre/study, home office, a specially-designed pooja corner and more.

An infinity pool, landscaped entertainment area, fitness centre and mechanical stack parking all come built in.



The background of the slide is an abstract, textured image. It features a series of horizontal, wavy bands of color. The top half is a dark, deep blue. Below this, there are several layers of green, ranging from a vibrant, almost neon green to a more muted, forest green. The transitions between these colors are not sharp but rather blended and wavy, giving the impression of liquid or perhaps a close-up of a natural surface like a rock face or a forest floor. The overall effect is one of depth and movement.

Big on
Features

Where total security meets complete convenience



- 3-tier security system

1. Main entrance of the property
2. Entrance of building
3. Entrance of residence



- Elevators with intercoms
- 100% power backup in common areas



- Automated high speed passenger lift
- Stacked parking in the basement







Big on
Location



Towards Airport RD 40Km



Nethradhama Super specialty Hospital



Food World



The National Degree College Ground



The National Degree College

2nd Main Rd

36th B Cross

36th A Cross



Fame India

3rd Main

Rastriya Vidyalayam Rd



MG Rd



Shivaji Nagar

7th Main Rd

7th Main Rd

5th Main



36th Cross

36th Cross

36th Cross



8th Block, Jayanagar



Front Avenue Pvt. Ltd.



Esika Infotech Pvt. Ltd.



Syndicate Bank



Roots 360

2nd Main Rd

37th Cross

37th Cross

37th Cross



Aishwarya Solar Technologies



Post Office

2nd Main Rd

3rd Main

Rastriya Vidyalayam Rd



RV Metro Station

The Jayanagar Park



South End Circle

The Big Tree is located on 36th Cross, 8th Block, Jayanagar. It is close to the Metro Station on the iconic South End Circle, a major landmark in Bengaluru. Today, it is an important centre wherein 6 roads meet to give you access to the rest of Bengaluru.

Distance from The Big Tree

M.G. Road – 6.50 km
Metro Station – 0.17 km
Kempegowda International Airport – 38.00 km
Koramangala – 7.60 km
Jayadeva Hospital – 4.70 km
Garuda Swagath Mall – 2.00 km



Quaint and Green

The IT boom and the subsequent evolution of Bengaluru have got people complaining about how the city is losing its old charm and not living up to the title of 'The Garden City'. But once you're in Jayanagar, the canopy of trees and parks on either side of the road give you the feeling that you've stepped back in time. This quaint residential township retains a special charm with wide roads, well-laid footpaths and tree-lined boulevards. No wonder it's often considered one of the most liveable place in Bengaluru.



Close to Food, Fun and everything Bengalurean

What makes Jayanagar a real treat for its residents, is the way traditional and modern cultures thrive in harmony. You can catch the latest flicks at **Inox in Garuda Swagath Mall** or enjoy a classic play at **Rangashankara Theatre**. Foodies can feast on some traditional South Indian treats at **Maiyas** or binge at the numerous **Chinese, Continental or multi-cuisine restaurants**. Nature lovers can take a quiet stroll around **Lalbagh Botanical Gardens**, while those looking for spiritual inspiration can visit the legendary **Ragigudda Temple**.





Big on Life





Get pampered.

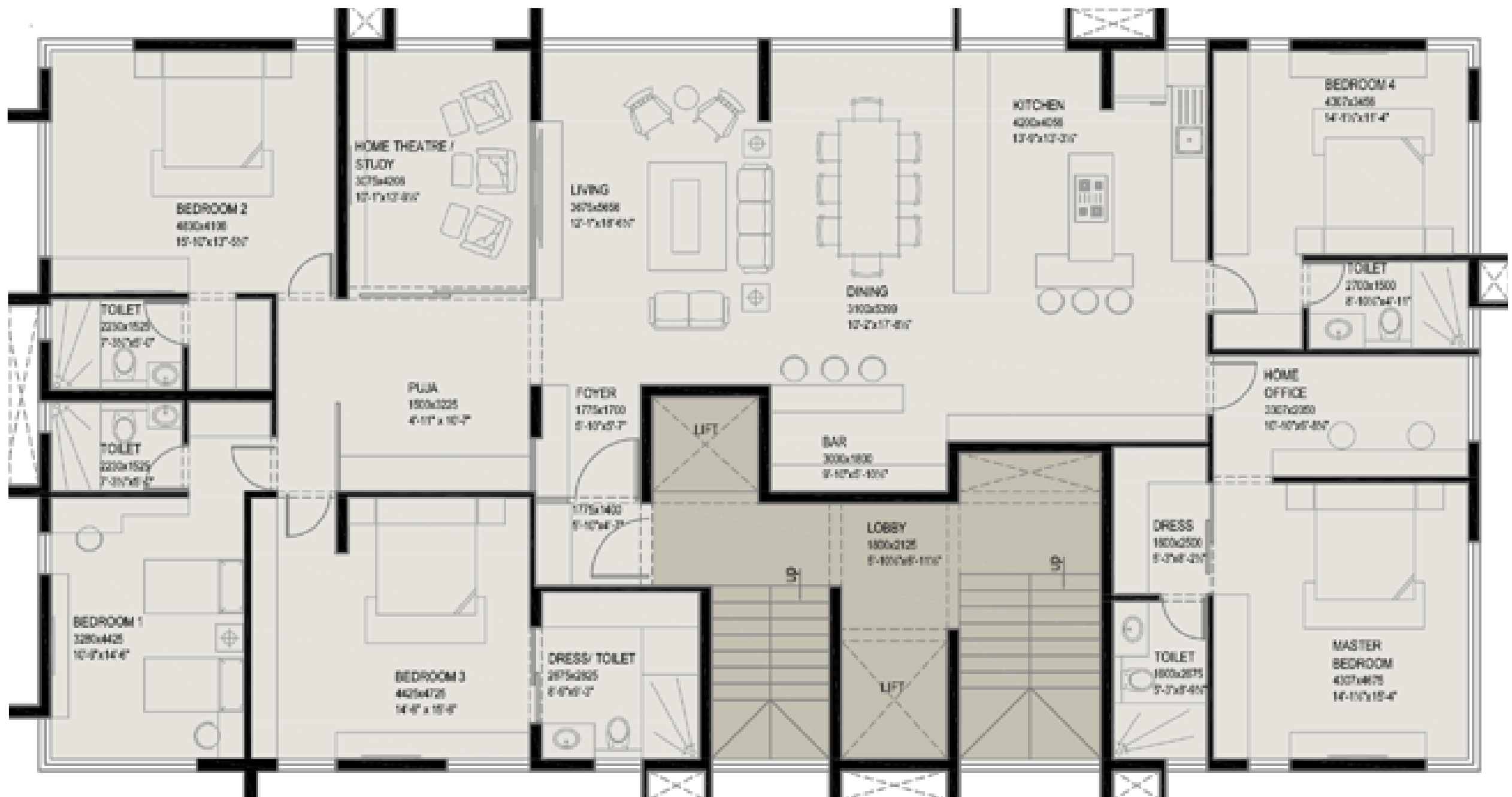
- Roof-top infinity pool
- Open air Jacuzzi
- Open-landscaped entertainment area
- Fitness centre



An abstract background featuring a mix of vibrant blue, teal, and yellow-green colors. The textures are layered and somewhat blurry, giving it a dreamlike or ethereal quality. There are some darker, more defined shapes on the right side, possibly resembling a face or a figure in profile, though they are not clearly identifiable.

Big on Plans

1st Floor - Single Suite



Single Suite - Sale Area - 3706 Sq.Ft

[illegible]

Typical Floor - Option for 3 BHK



3 BHK Large - Sale Area - 2834 Sq.Ft



3 BHK Regular - Sale Area - 2330 Sq.Ft



Reference image

Specifications

General Specifications

- Grand 8 ft. high entry doors
- 100% power backup in common areas

Flooring/Skirting

- Marble in Living and Dining
- Wooden flooring in all bedrooms
- PVC/ Wooden floor in all deck of living, master bedroom & rest in PVC tile wood finish

Internal Paint Finish

- Plastic emulsion paint

Doors and Windows

- Main entrance with flush door finished with polished teak veneer or equivalent
- Internal rooms have semi solid flush doors finished with polished teak veneer or equivalent
- Toilet's have semi solid flush doors with laminate finish or equivalent
- All room windows - anodized/powder coated aluminum or UPVC window with glass

Bathrooms

- Composite marble flooring in bathroom of master bedroom
- Tile dado in all other bathrooms
- CP and sanitary fittings of reputed brand
- Water heater in all toilets

Kitchen

- Modular kitchen of reputed make
- Dado tiles 2 ft. above counter
- Sink double bowl with drain board
- Gas hob, chimney & built-in oven of reputed make
- Water heaters

Home Automation

- Integrated security system

Electrical

- Concealed wiring with premium quality modular switches

Air Conditioning

- Provision for AC



The Artists

Architects

Mistry & Associates, Bengaluru

Structural Engineers

Sterling Engineering Consultancy Services Pvt. Ltd.

Service Consultants

Maple Consultant services

Legal Consultants

Poovayya & Co., Bengaluru



Tomorrow. Today.



Cherag Ramakrishnan, Managing Director

Creating future-ready homes

Cear Realty, headquartered in Mumbai, made an entry into the real estate business in 2013. A young and professionally managed organization, Cear Realty is led by Cherag Ramakrishnan, a veteran of the real estate sector. He has led the development of prestigious projects spanning 15 million sq.k. across 6 States with a development outlay of about USD 600 million under the aegis of Equinox Realty (Essar Group Company).

Cear Realty has premium developments coming up in Bengaluru and Mumbai. Its superluxury projects in Bengaluru include The Hamlet, a residential project in Sadashivanagar and The Big Tree, a multistoried residential development in Jayanagar. Vesta Villas is an exclusive villa development at Alibaug, near Mumbai. A residential complex in Bhandup known as Primo is yet another project in its portfolio.

Cear Realty is now looking for expansion across asset categories in Bengaluru and Mumbai.

Gallery of existing projects



Sadashivanagar, Bengaluru

One floor. One signature apartment.
Seven super-luxury single floor apartments with a grandstand view of Sankey Tank Lake.



VESTA
VILLAS

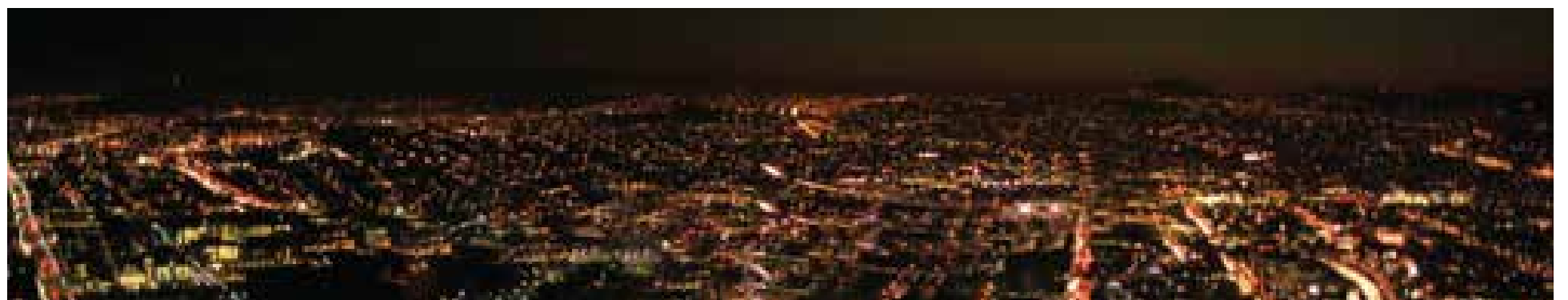
Alibaug, Mumbai

Vesta Villas comes with more than a beautifully crafted residence.
Our team of architects work to transform your space into a home built for luxury and whatever your heart desires.
2.5 acre super-premium villa project just 20 minutes from Mumbai.



Bhandup, Mumbai

Compact, high quality
1 BHK and 2 BHK apartments.





Tomorrow. Today.

Ceeaar Realty & Infrastructure Pvt. Ltd.

Corporate Office : Unit No. 210, 2nd floor, Trade Centre, Bandra Kurla Complex, Bandra (E), Mumbai - 400 051, India.

Bengaluru Office : No.17, 1st Floor, Sadashivanagar, Bellary Road, Bengaluru - 560080, India.

Site Address: Municipal No 30, 8th block, 36 cross, Jayanagar, Bengaluru - 560 082 , India.

Toll free: 1800 2662155

www.ceeaarrealty.com | Sales enquires: sales@ceeaarrealty.com

Information about the project is indicative of the kind of development that is proposed by the developer. Artist's impressions are used to illustrate some products and features. All plans, pictures and models herein are representative conceptions and not actual buildings or facilities and as such the developer reserves the right to make changes or alterations, amend and vary the layout, plans, and specifications or feature at its own sole discretion without any obligations and or any prior notice whatsoever, but subject to the approval of the competent authorities as applicable.

1 sq. mts = 10.764 sq. ft and 1 mt = 3.28 ft.

Housing Finance:



Financial Assistance:

